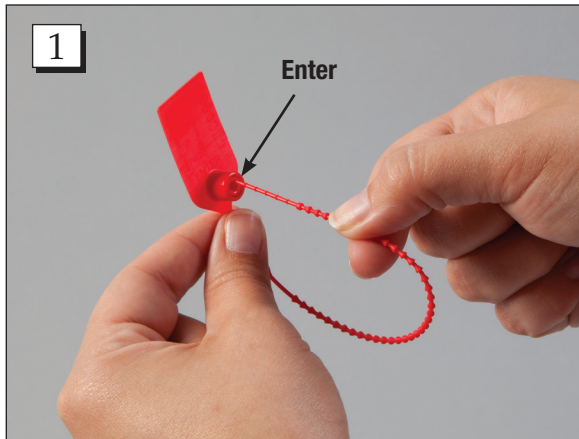
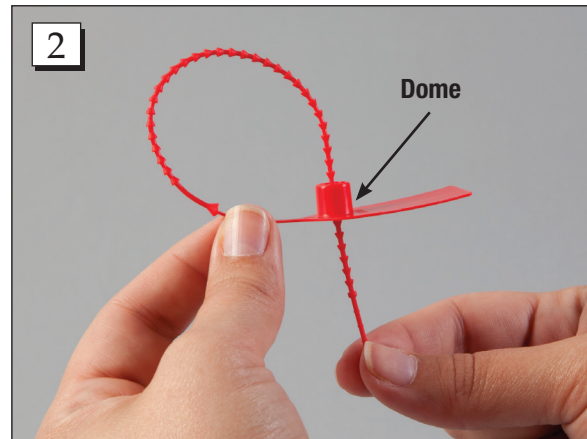


INSTRUCTIONS FOR

Pull-Tight Seals



Step 1. Insert the thin end of the Pull-Tight Seal stem through the locking dome on the side marked "ENTER".



Step 2. Pull the stem through the locking dome on the side marked "Enter". Pull it as tight as possible around the item being sealed. This will ensure that the seal stem cannot be broken and reinserted into the locking mechanism.



Step 3. Utilize the "TUG" test by grasping the tab of the seal, gently tug on it to determine closure. If you are able to loosen the seal, IT IS NOT FULLY LOCKED. Remove the seal and replace with a new one.

- If the stem is inserted into the wrong side of the tab, the teeth of the locking dome can be damaged and the seal will not work properly. If inserted wrong, remove the seal and begin with a new seal. Do not re-use the seal.
- If someone seeks to defeat the seal it is possible. The seal is to be used to preclude prior use. It is not to be used to prevent theft. Broken seals indicate that the contents have possibly been used or tampered with.

Call Free: 1.800.848.1633 • Fax Free: 1.800.447.2923
Web: GoHCL.com • Email: hcl@GoHCL.com