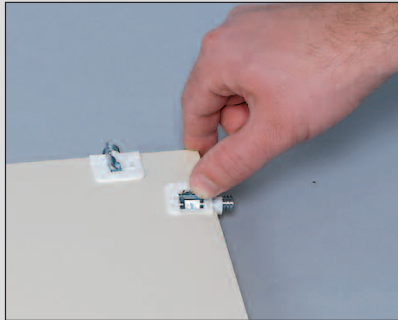


ASSEMBLY INSTRUCTIONS FOR

18" Utility Cabinet with Lock #5132

NOTE: Be sure to select the appropriate mounting hardware to ensure safe and reliable use. Mount hardware through a stud, blocking or rigid structure where possible during installation.



NOTE: Fitting toggles on back, top, and bottom panels are shipped in the secure position. Flip the toggles up to unlock before you start assembly.



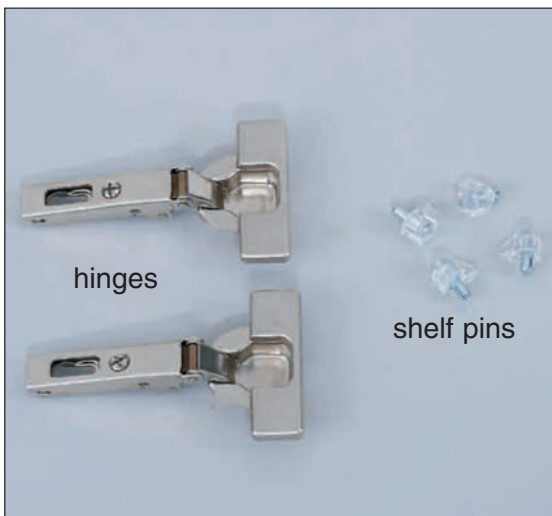
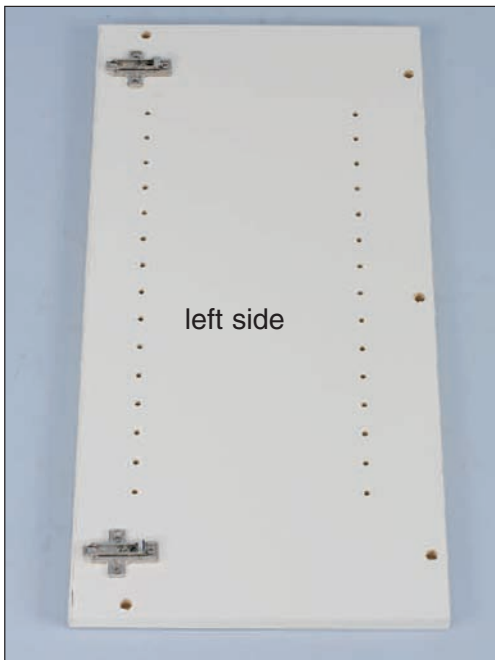
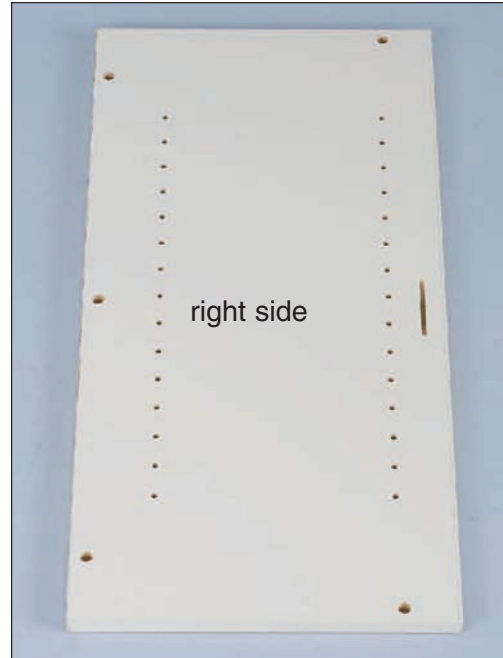
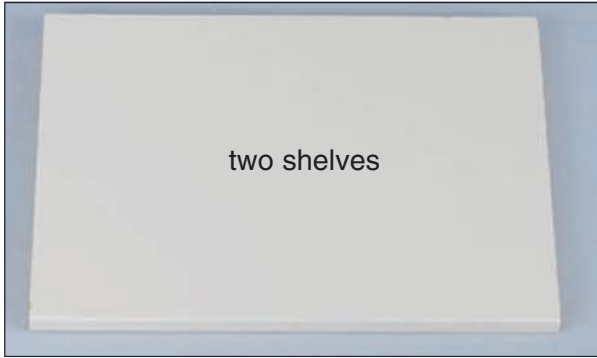
Before assembling your Utility Cabinet, please familiarize yourself with all the parts and check to make sure you have all the parts listed on pages 1 and 2.



Call Free 1.800.848.1633 or 1.888.HCL-INTL Fax Free 1.800.447.2923
Website: www.HealthCareLogistics.com • Email: hcl@HealthCareLogistics.com

ASSEMBLY INSTRUCTIONS FOR

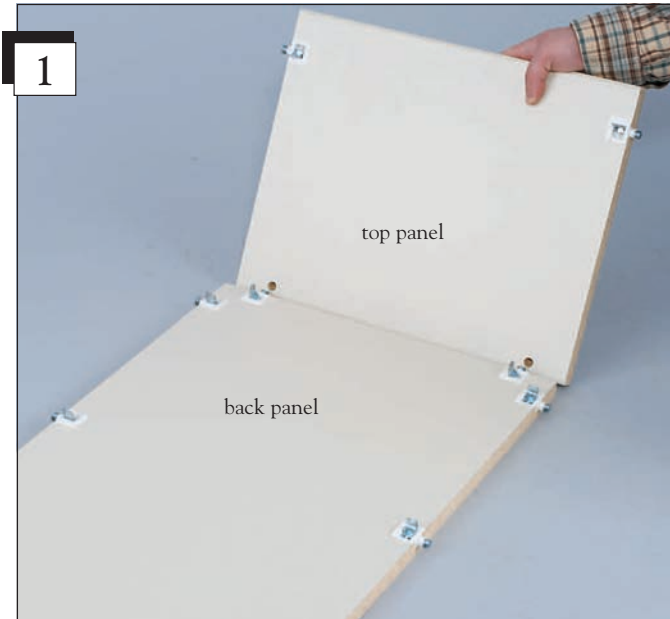
18" Utility Cabinet with Lock #5132



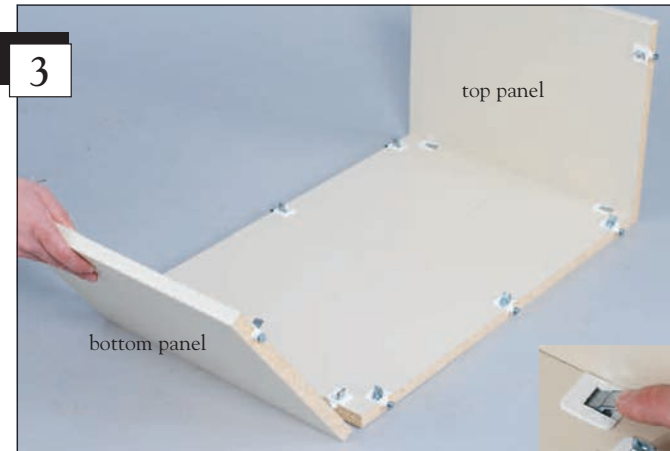
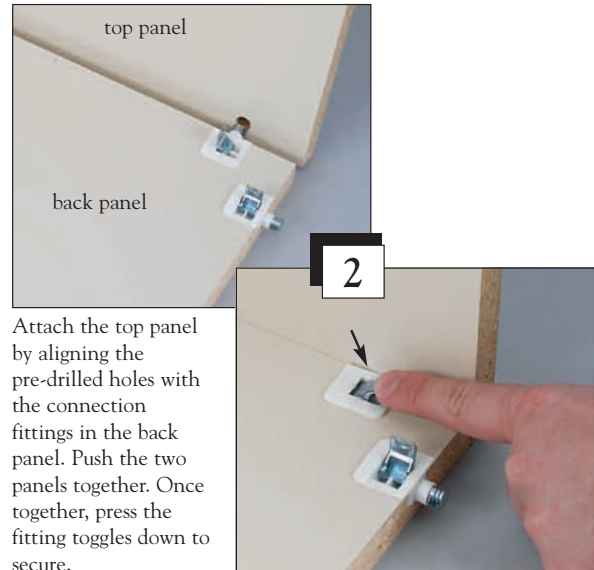
Call Free 1.800.848.1633 or 1.888.HCL-INTL Fax Free 1.800.447.2923
Website: www.HealthCareLogistics.com • Email: hcl@HealthCareLogistics.com

ASSEMBLY INSTRUCTIONS FOR

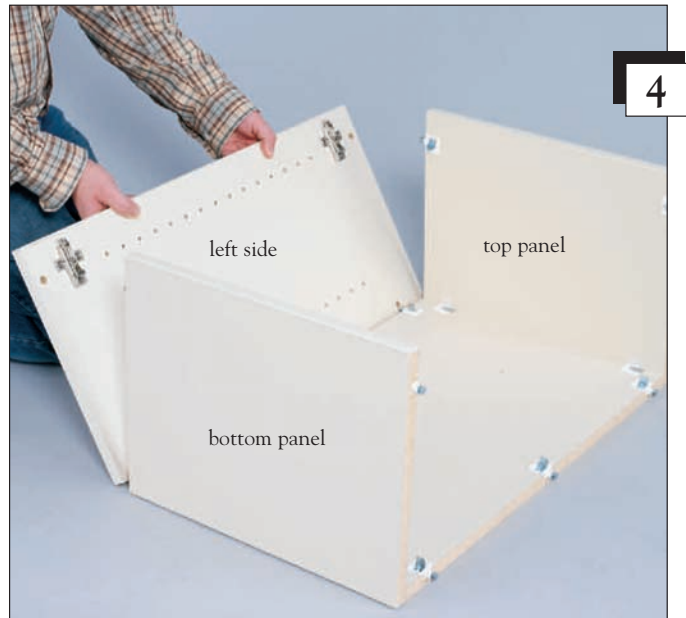
18" Utility Cabinet with Lock #5132



Lay the back panel flat on the floor. Bring the top panel into position.



Locate the bottom panel and position at the bottom of the back panel. Attach the bottom panel by aligning the pre-drilled holes with the connection fittings in the back panel. Push the two panels together. Once together, press the fitting toggles down to secure.



Attach the left side by aligning the pre-drilled holes with the connection fittings in the back, top and bottom panels.

Call Free 1.800.848.1633 or 1.888.HCL-INTL Fax Free 1.800.447.2923

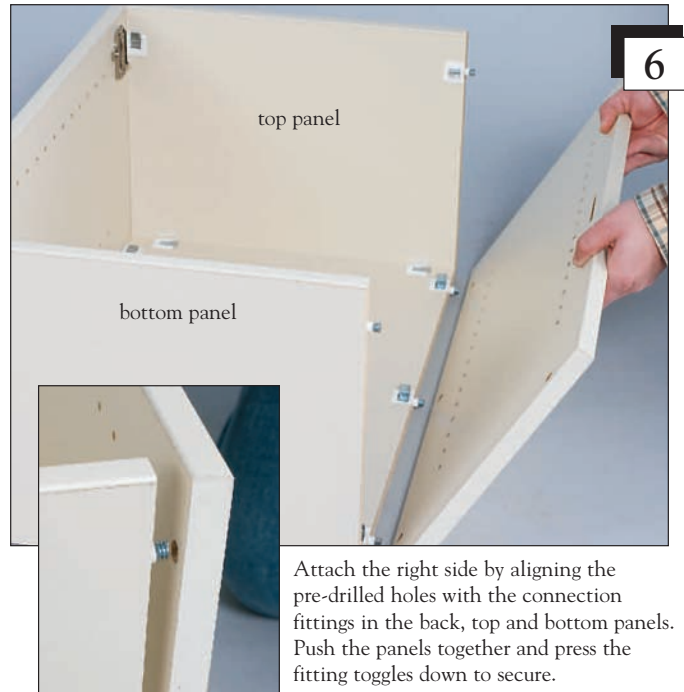
Website: www.HealthCareLogistics.com • Email: hcl@HealthCareLogistics.com

ASSEMBLY INSTRUCTIONS FOR

18" Utility Cabinet with Lock #5132



Push the panels together and press the fitting toggles down to secure.



Stand your unit to the upright position. Decide the positioning of your shelves. Shelves are adjustable in 1/4" (32 mm) increments. Insert the clear plastic shelf pins in the back holes at your desired height. Once the back shelf pins are in place insert shelf pins into the front shelf holes at the same height as the back pins.

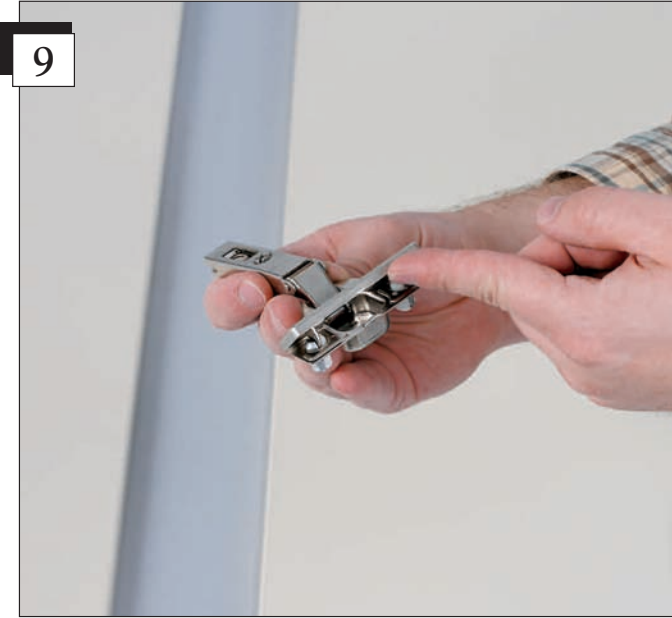


After your shelf pins are in place you're ready to install your shelf. Position shelf onto the shelf pins. Repeat 7-8 steps for your second shelf.

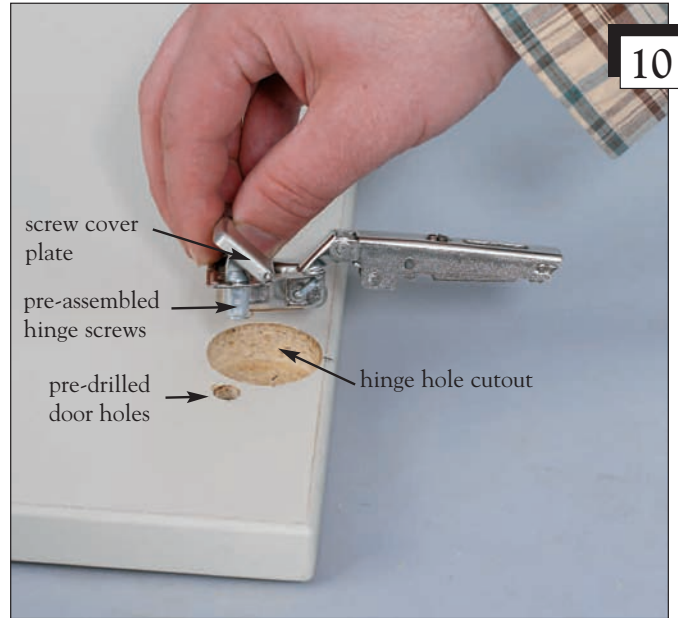
Call Free 1.800.848.1633 or 1.888.HCL-INTL Fax Free 1.800.447.2923
Website: www.HealthCareLogistics.com • Email: hcl@HealthCareLogistics.com

ASSEMBLY INSTRUCTIONS FOR

18" Utility Cabinet with Lock #5132



NOTE: Latches are shipped with the screw cover plate in the secure position. Before installing latches, the screw cover plate will need released. To release flip the plate up with your fingernail or small screwdriver. The plate is hinged and will lift up.



Begin by laying the door flat on the ground with the hinge hole cutouts (inside of door) facing up. With screw cover plate lifted, insert pre-assembled hinge screws into the pre-drilled door holes. There are two latches.



Once hinges are in place and flush against doors, press down on the screw cover plates to secure hinges to doors.



Your doors should look like the photo above when hinges are attached.



Call Free 1.800.848.1633 or 1.888.HCL-INTL Fax Free 1.800.447.2923

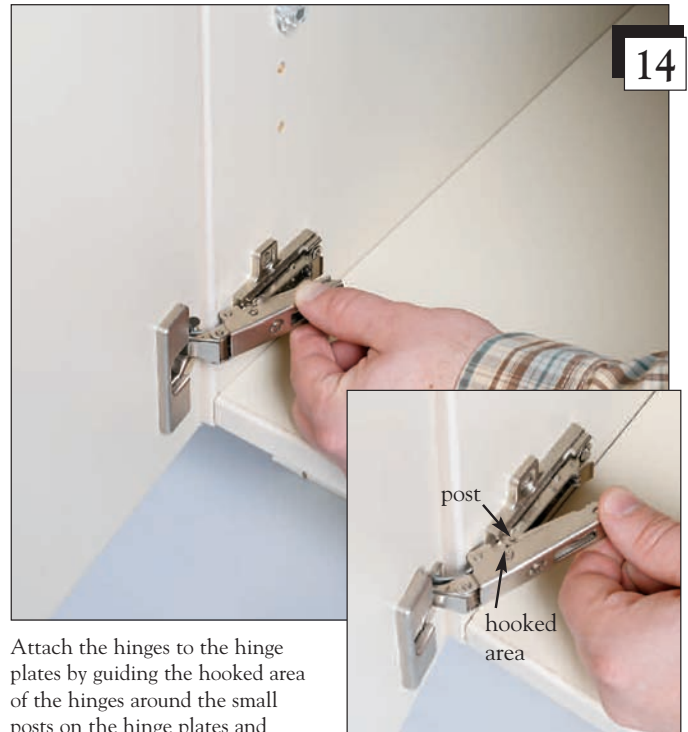
Website: www.HealthCareLogistics.com • Email: hcl@HealthCareLogistics.com

ASSEMBLY INSTRUCTIONS FOR

18" Utility Cabinet with Lock #5132



The door is ready to be attached. Position the door onto the side of the cabinet unit. The hinges should align with pre-installed hinge plates mounted inside of the unit.



Attach the hinges to the hinge plates by guiding the hooked area of the hinges around the small posts on the hinge plates and pressing them to the plates until they latch.

This step can be tricky and may take a few attempts to get the hinges to latch.



Your locking door is now attached and can be used to secure contents. The cam lock includes two keys. Additional or replacement keys can be purchased through our Resource department.



Call Free 1.800.848.1633 or 1.888.HCL-INTL Fax Free 1.800.447.2923
Website: www.HealthCareLogistics.com • Email: hcl@HealthCareLogistics.com

INSTRUCTIONS FOR

KEDL Lock

The KEDL is offered in two versions:
Manual Lock and Self Lock. Contents will vary depending on the version.

Contents – Manual Lock Version:

Manual KEDL Assembly
2 AAA alkaline batteries
1 Offset locking cam / 1 Straight locking cam
FlexaCam adapters
Mounting hardware

Contents – Self Lock Version:

Self Locking KEDL assembly featuring SlamCAM
2 AAA alkaline batteries
SlamCAM spacer discs
Mounting hardware

Each lock contains 2 green stickers that are needed for resetting KEDL. In the event KEDL needs reset, one green sticker is placed on the back of the device. The remaining green sticker should be saved in a safe and secure location for future reference. HCL keeps no record of this.

Care and Cleaning

To clean the KEDL surface, apply non-acid based cleaner to a clean cotton cloth; do not spray cleaner directly on the KEDL. Wipe down keypad and its respective housing surfaces of excess cleaner.

Powering Up and Battery Installation

KEDL is shipped with two AAA batteries. While KEDL features a low battery indicator, annual battery replacement is recommended. Mixing batteries of different chemistries could damage the KEDL resulting in lock failure.

To power up KEDL, remove the red tag. Lock is now ready for use.

A Phillips head screw driver will be required to remove the battery cover. (Not Included)

To change batteries:

1. Loosen the retaining screw.
2. Remove battery cover.
3. Press CLEAR 5 times.
4. Insert new batteries as shown in the illustration.
5. Reinstall battery cover, tighten retaining screw.

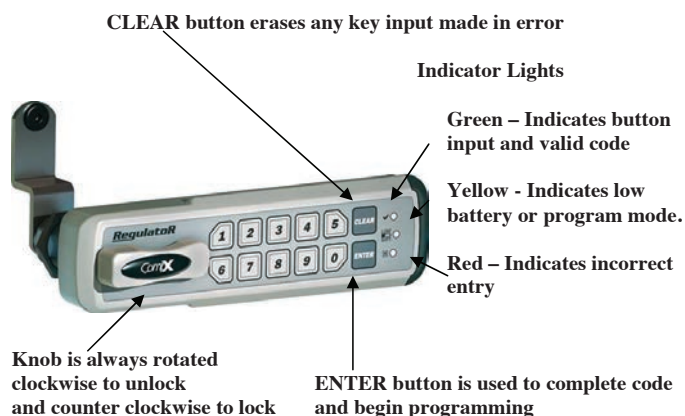


Programming – Introduction

KEDL is easy to program and operate. Type the user code (factory default 1234) and press ENTER to lock or unlock the cabinet.

The supervisor can change operating codes, modes and restore lock settings. While KEDL is easy to program, we highly recommend reading the complete programming instructions prior to making any changes. Remember to keep track of any programming changes.

Button locations, indicator lights and knob referenced in the programming instructions are shown below.



Call Free: 1.800.848.1633 • Fax Free: 1.800.447.2923

Web: GoHCL.com • Email: hcl@GoHCL.com

INSTRUCTIONS FOR

KEDL Lock

KEDL is offered with Self Lock featuring SlamCAM. If your lock is the Self Lock version, follow the directions below to unlock and lock the KEDL:



To operate the Self Lock version of RegulatoR: Type a valid code, press ENTER and rotate knob clockwise 90°, hold knob until door or drawer is open. Release knob, RegulatoR knob will return to the locked position. Door or drawer can be closed at any time.

The KEDL is offered in a Manual Lock version. If your lock is the Manual Lock version follow the directions below to unlock and lock the KEDL.



To operate Manual Lock version of RegulatoR:
To **unlock**, type a valid code, press ENTER and rotate knob clockwise 90°.
To **lock**, rotate knob 90° counter clockwise.

KEDL Programming Mode

To enter programming mode you must know the supervisor code. The default supervisor code is **12345**. Once in programming mode, multiple changes can be made prior to exiting programming.

There is a 10 second programming time limit between each step. If KEDL times out or an error is made, programming will end and you will need to enter programming mode again.

1. Lock must be in the locked position prior to entering programming mode.
2. Type supervisor code and press ENTER.
3. Turn knob clockwise 90° to the unlocked position and press and hold ENTER for 3 seconds (yellow indicator light will illuminate).
· If product is Self Lock with the SlamCAM feature you can now let go of the knob.
4. With the yellow indicator light illuminated, programming can begin.

Changing the User Code

To change the user code, follow the steps on page 8 to enter programming mode.

The factory default user code is 1234 (User codes must be 4 to 8 digits in length.)

There is a 10 second programming time limit between each step. If KEDL times out or an error is made, programming will end and you will need to enter programming mode again.

1. Place KEDL into programming mode (see page 8).
2. Press 1 and then press ENTER.
3. Type the current user code and press ENTER.
4. Type the new user code and press ENTER.
5. Retype the new user code and press ENTER.
6. If successful, the green indicator light will illuminate for 1 second.

Continue programming or press 9 and then ENTER to exit programming.

Call Free: 1.800.848.1633 • Fax Free: 1.800.447.2923

Web: GoHCL.com • Email: hcl@GoHCL.com

INSTRUCTIONS FOR

KEDL Lock

Changing the Supervisor Code

To change the supervisor code, follow the steps on page 8 to enter programming mode.

The factory default supervisor code is 12345 (supervisor codes must be 4 to 8 digits in length.)

There is a 10 second programming time limit between each step. If KEDL times out or an error is made, programming will end and you will need to enter programming mode again.

1. Place KEDL into programming mode (see page 8).
2. Press 2 and then press ENTER.
3. Type the current supervisor code and press ENTER.
4. Type the new supervisor code and press ENTER.
5. Retype the new supervisor code and press ENTER.
6. If successful, the green indicator light will illuminate for 1 second.

Continue programming or press 9 and then ENTER to exit programming.

KEDL features a reset code which will restore the default supervisor code and user code. KEDL was shipped with reset stickers; one attached to the back of the KEDL and an extra sticker that should be saved in a safe and secure location for future reference.

To restore the factory default supervisor and user code, type the Reset Code assigned to the KEDL and press ENTER.

The KEDL features several modes of operation. These functions can be changed using the following instructions with a valid supervisor code.

Programming Single Use Mode / Standard Mode

Single Use Mode allows for a revolving user code so multiple people may use the lock without having to reprogram the KEDL each time.

Note: This mode cannot be used with Self Lock with SlamCAM.

Standard Mode KEDL operates with a fixed code. To change the code, follow the Changing the User Code steps.

There is a 10 second programming time limit between each step. If KEDL times out or an error is made, programming will end and you will need to enter programming mode again.

1. Place KEDL into programming mode.
 - a. To turn Single Use Mode "ON": type 51 and then press ENTER. OR
 - b. To return to Standard Mode: type 50 and then press ENTER.
2. If successful, the green indicator light will illuminate for 1 second.

Note: Returning to Standard Mode will reset the factory user default code (1234).

Continue programming or press 9 and then ENTER to exit programming.

Programming Single Use Timeout ON / Single Use Timeout OFF

Warning: Manual Lock - Single Use Timeout ON is a feature to prevent users from occupying a shared use locker or cabinet for a prolonged period of time. Turning this feature on will disable the user code after a programmable amount of time. After this time elapses, KEDL and can only be opened with the supervisor code.

To change the KEDL to Single Use Timeout ON or OFF, follow the steps to enter programming mode.

There is a 10 second programming time limit between each step. If KEDL times out or an error is made, programming will end and you will need to enter programming mode again.

1. Place KEDL into programming mode (see page 8).
 - a. To set Timeout ON, type 2XX and then press ENTER. (XX represents a time period from 04 - 12 in whole hours.)

OR

- b. To turn Timeout OFF, type 20 and then press ENTER.

3. If successful, the green indicator light will illuminate for 1 second.

Continue programming or press 9 and then ENTER to exit programming.

Reset User Code to Factory Default 1234

(Does not apply to Single Use Mode)

To reset the User Code to the factory default 1234 follow the steps to enter programming mode.

There is a 10 second programming time limit between each step. If KEDL times out or error is made, programming will end and you will need to enter programming mode again.

1. Place KEDL into programming mode.
2. Type 8888 and then press the ENTER button.
3. If successful, the green indicator light will illuminate for 1 second.

Continue programming or press 9 and then ENTER to exit programming.

Call Free: 1.800.848.1633 • Fax Free: 1.800.447.2923

Web: GoHCL.com • Email: hcl@GoHCL.com

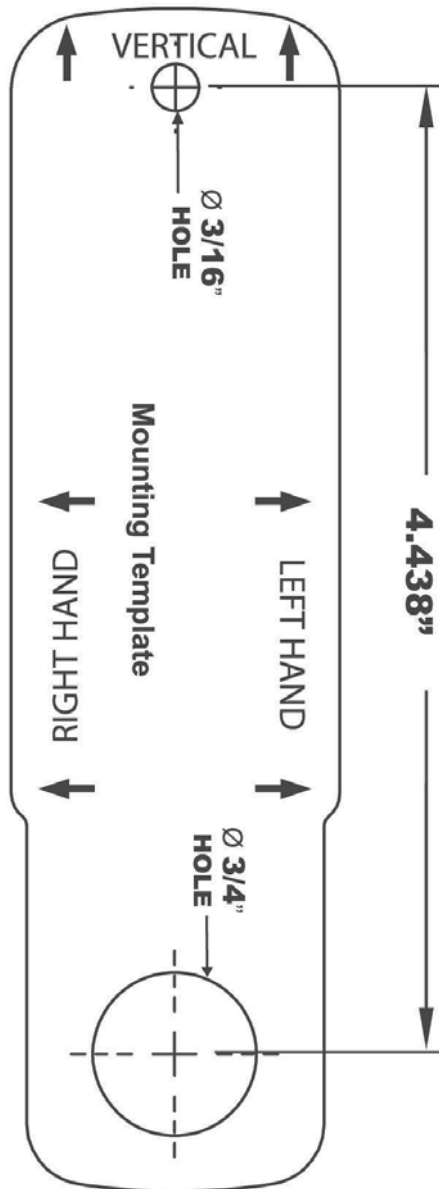
INSTRUCTIONS FOR

KEDL Lock

1"

NOTE: Print this page and measure the line above. It is **ONE INCH LONG**. If it measures less than or more than one inch, the template measurements also need to be scaled accordingly.

**FAILURE TO DO SO
COULD RESULT IN
MISDRILLED HOLES.**



Call Free: 1.800.848.1633 • Fax Free: 1.800.447.2923

Web: GoHCL.com • Email: hcl@GoHCL.com