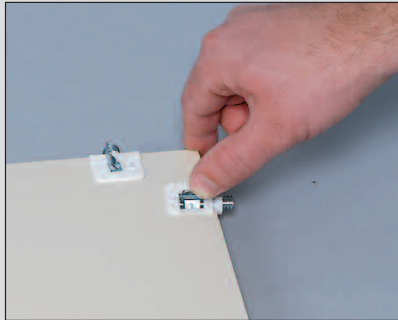


ASSEMBLY INSTRUCTIONS FOR

18" Utility Cabinet with Lock #5130

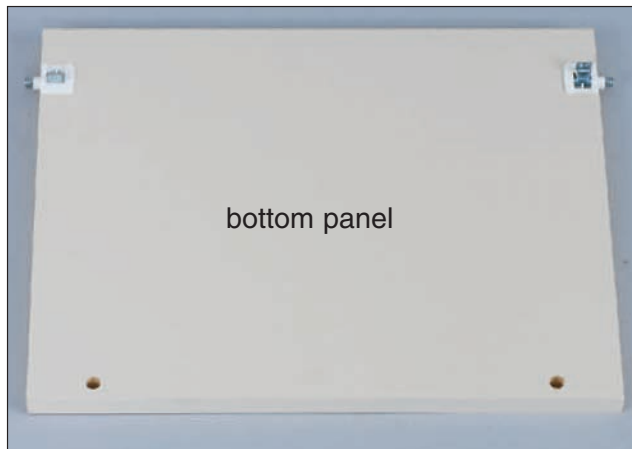
NOTE: Be sure to select the appropriate mounting hardware to ensure safe and reliable use. Mount hardware through a stud, blocking or rigid structure where possible during installation.



NOTE: Fitting toggles on back, top, and bottom panels are shipped in the secure position. Flip the toggles up to unlock before you start assembly.



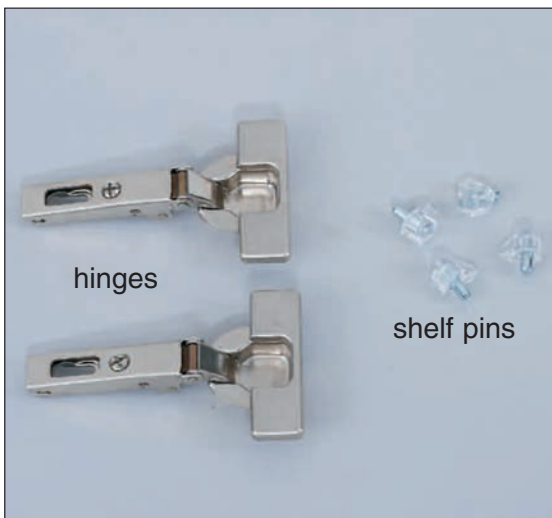
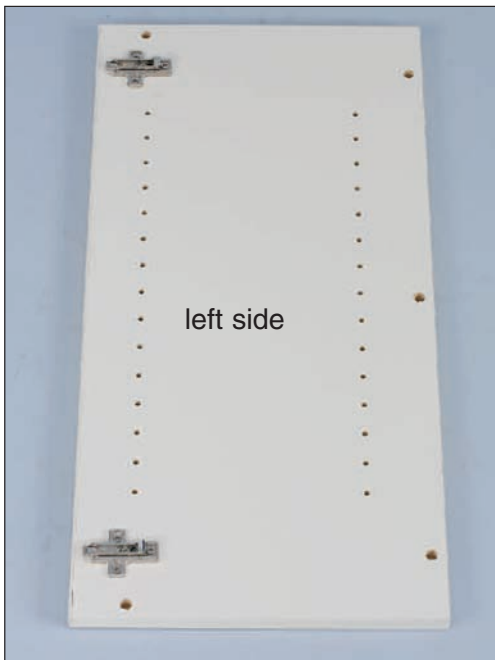
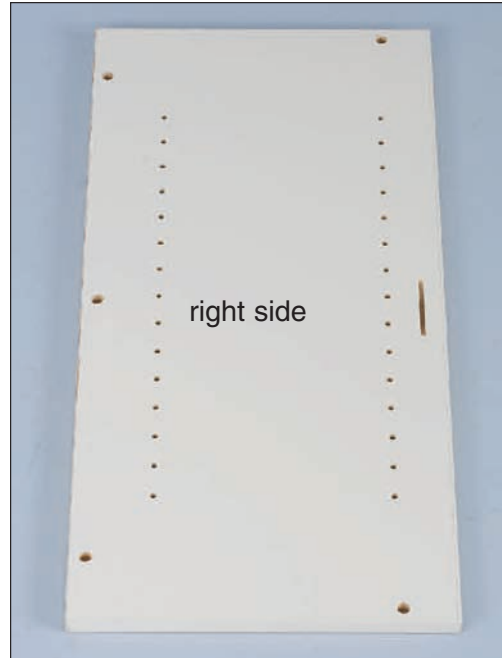
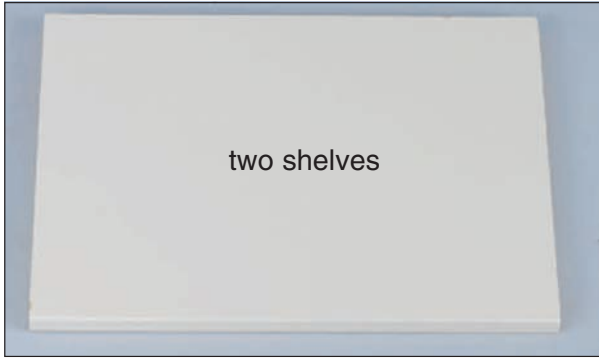
Before assembling your Utility Cabinet, please familiarize yourself with all the parts and check to make sure you have all the parts listed on pages 1 and 2.



Call Free 1.800.848.1633 or 1.888.HCL-INTL Fax Free 1.800.447.2923
Website: www.HealthCareLogistics.com • Email: hcl@HealthCareLogistics.com

ASSEMBLY INSTRUCTIONS FOR

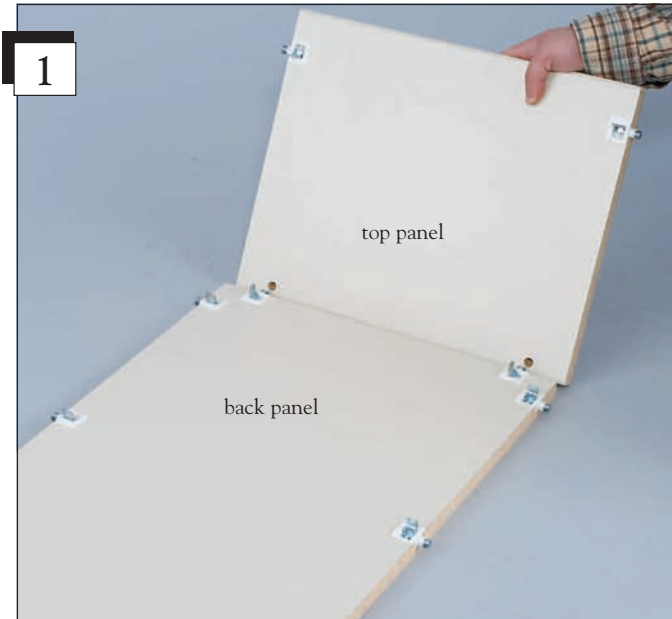
18" Utility Cabinet with Lock #5130



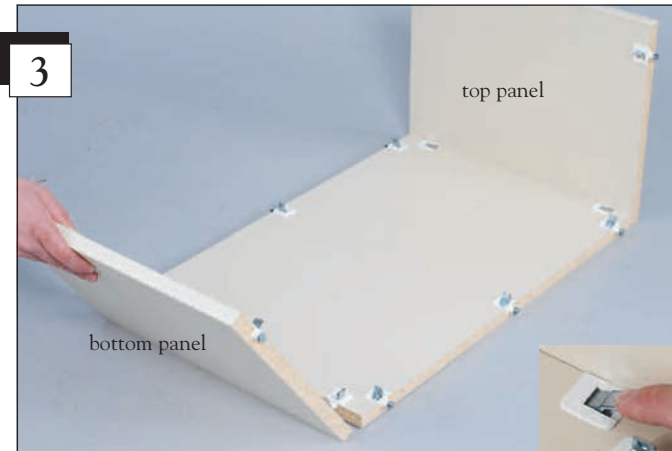
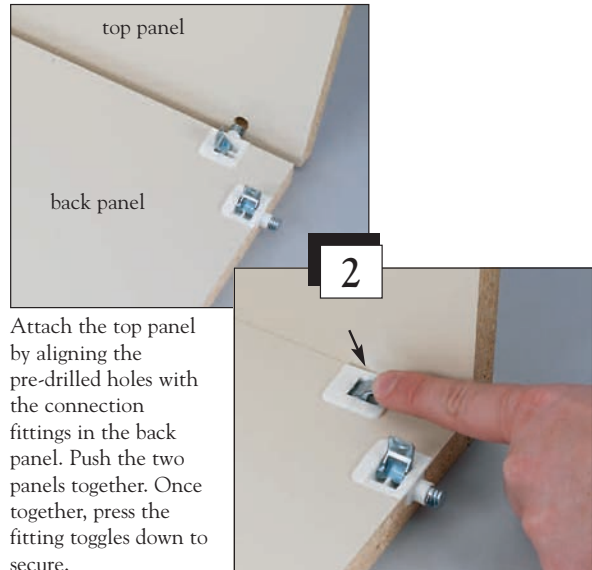
Call Free 1.800.848.1633 or 1.888.HCL-INTL Fax Free 1.800.447.2923
Website: www.HealthCareLogistics.com • Email: hcl@HealthCareLogistics.com

ASSEMBLY INSTRUCTIONS FOR

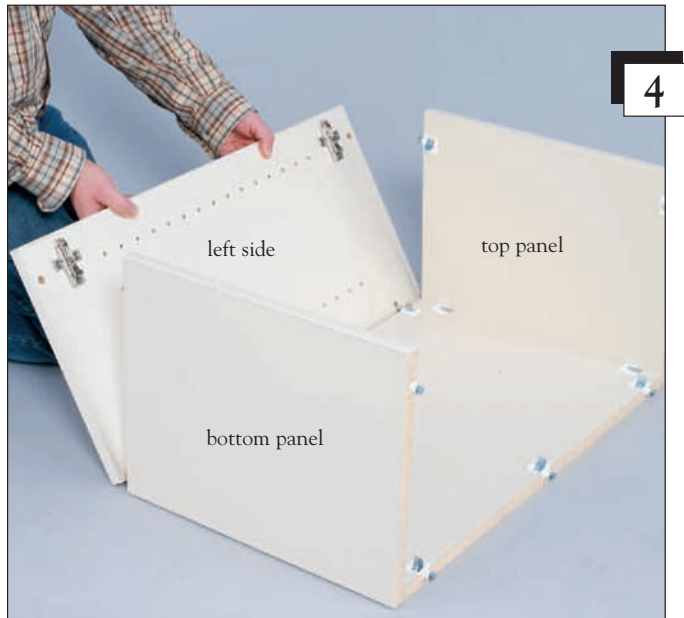
18" Utility Cabinet with Lock #5130



Lay the back panel flat on the floor. Bring the top panel into position.



Locate the bottom panel and position at the bottom of the back panel. Attach the bottom panel by aligning the pre-drilled holes with the connection fittings in the back panel. Push the two panels together. Once together, press the fitting toggles down to secure.



Attach the left side by aligning the pre-drilled holes with the connection fittings in the back, top and bottom panels.

Call Free 1.800.848.1633 or 1.888.HCL-INTL Fax Free 1.800.447.2923

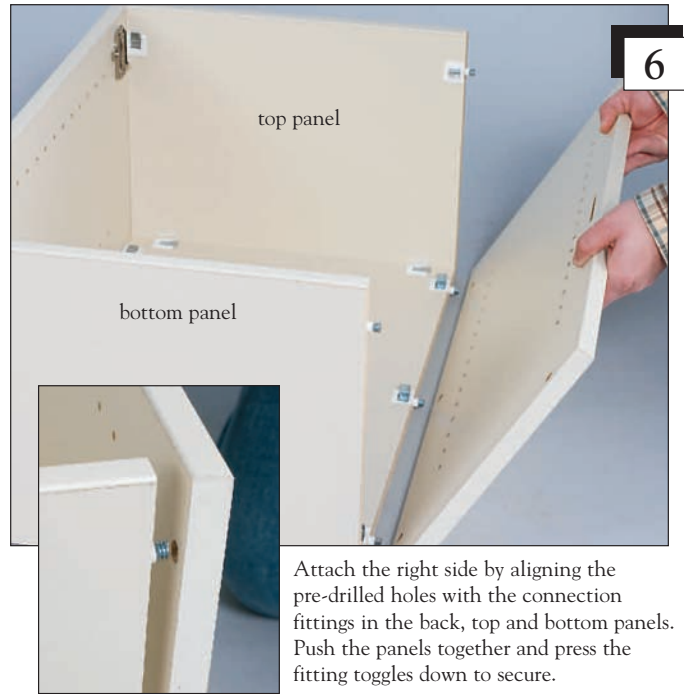
Website: www.HealthCareLogistics.com • Email: hcl@HealthCareLogistics.com

ASSEMBLY INSTRUCTIONS FOR

18" Utility Cabinet with Lock #5130



Push the panels together and press the fitting toggles down to secure.



Stand your unit to the upright position. Decide the positioning of your shelves. Shelves are adjustable in 1/4" (32 mm) increments. Insert the clear plastic shelf pins in the back holes at your desired height. Once the back shelf pins are in place insert shelf pins into the front shelf holes at the same height as the back pins.

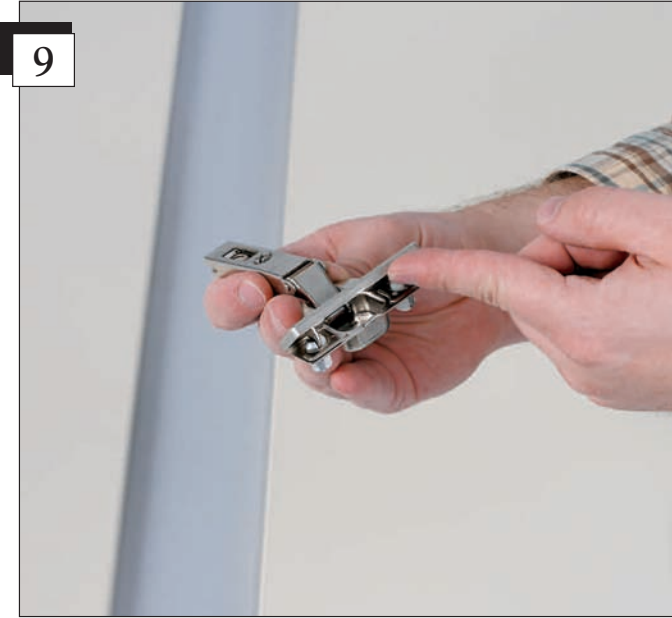


After your shelf pins are in place you're ready to install your shelf. Position shelf onto the shelf pins. Repeat 7-8 steps for your second shelf.

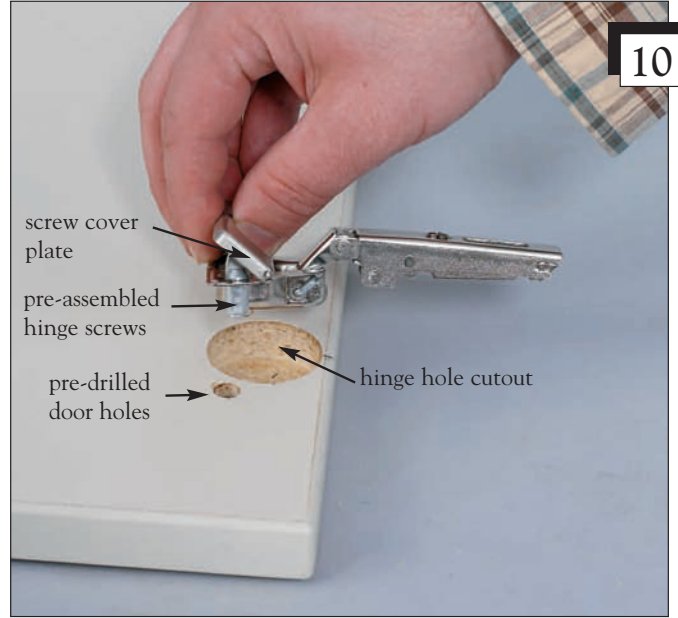
Call Free 1.800.848.1633 or 1.888.HCL-INTL Fax Free 1.800.447.2923
Website: www.HealthCareLogistics.com • Email: hcl@HealthCareLogistics.com

ASSEMBLY INSTRUCTIONS FOR

18" Utility Cabinet with Lock #5130



NOTE: Latches are shipped with the screw cover plate in the secure position. Before installing latches, the screw cover plate will need released. To release flip the plate up with your fingernail or small screwdriver. The plate is hinged and will lift up.



Begin by laying the door flat on the ground with the hinge hole cutouts (inside of door) facing up. With screw cover plate lifted, insert pre-assembled hinge screws into the pre-drilled door holes. There are two latches.



Once hinges are in place and flush against doors, press down on the screw cover plates to secure hinges to doors.



Your doors should look like the photo above when hinges are attached.



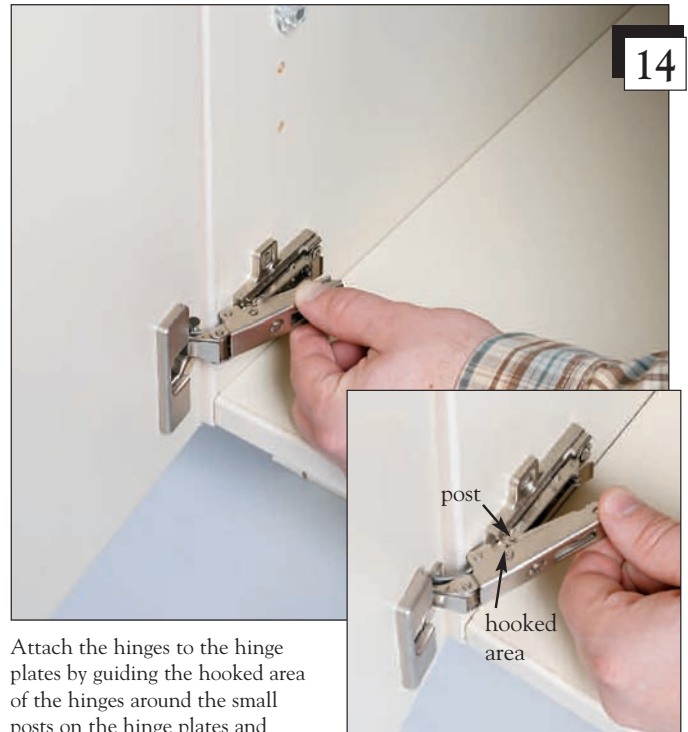
Call Free 1.800.848.1633 or 1.888.HCL-INTL Fax Free 1.800.447.2923
Website: www.HealthCareLogistics.com • Email: hcl@HealthCareLogistics.com

ASSEMBLY INSTRUCTIONS FOR

18" Utility Cabinet with Lock #5130



The door is ready to be attached. Position the door onto the side of the cabinet unit. The hinges should align with pre-installed hinge plates mounted inside of the unit.



Attach the hinges to the hinge plates by guiding the hooked area of the hinges around the small posts on the hinge plates and pressing them to the plates until they latch.

This step can be tricky and may take a few attempts to get the hinges to latch.



Your locking door is now attached and can be used to secure contents. The cam lock includes two keys. Additional or replacement keys can be purchased through our Resource department.



Call Free 1.800.848.1633 or 1.888.HCL-INTL Fax Free 1.800.447.2923
Website: www.HealthCareLogistics.com • Email: hcl@HealthCareLogistics.com