



CE Duo System – Product Use

CE Duo Operating Procedures and Working Methods



Pre-Prepared System

Product Use – Operating Procedure

Step 1 – Gathering Equipment



Pre-Prepared

Organize all the necessary tools for cleaning/disinfecting operation:

1. Trolley

- a. Configuration is flexible depending on specific cleaning needs and areas
- b. 6L buckets will be used for wipes and sponges on top rack near push bar
- c. Large boxes for preparing the mops
- d. Plastic Bag for waste or used mops
- e. Sterile liners for boxes needed per current SOP

2. Frame + Handle

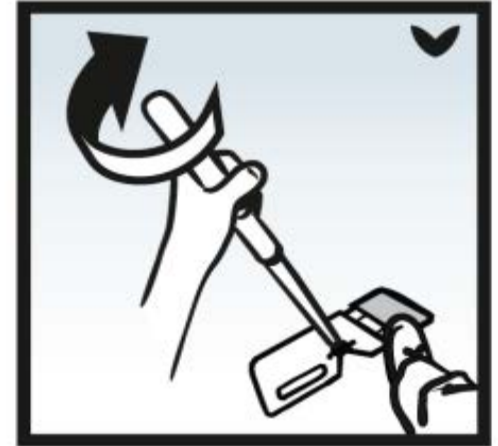
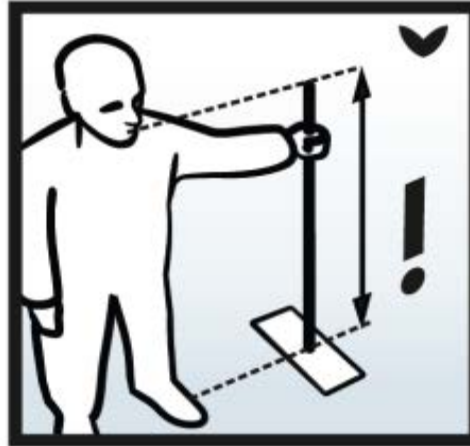
- a. 50cm + 35cm frames
- b. Long + Short handles

3. Clean Mops

- a. Arrange a max of 6 mops in mop box

Product Use – Operating Procedure

Step 2 – Adjusting the Handle

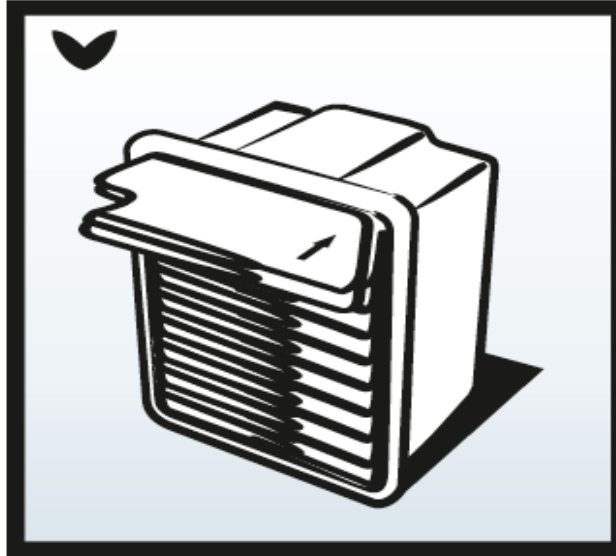
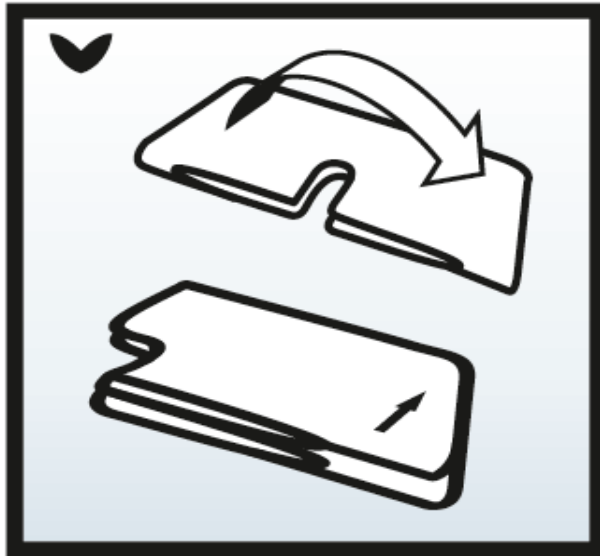


Adjust ergonomic handle to suit operator height

- Chin height is recommended for floor cleaning
- Each time the handle is adjusted it should be sprayed with Sterile (Steri-Perox).
- After handle is adjusted in the room, gloves should be sprayed with IPA

Product Use – Operating Procedure

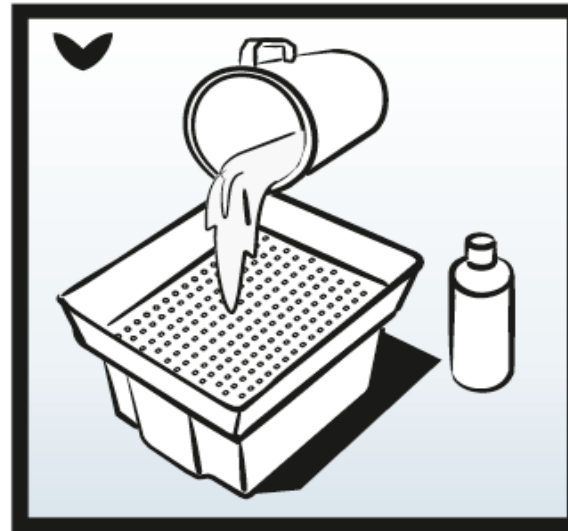
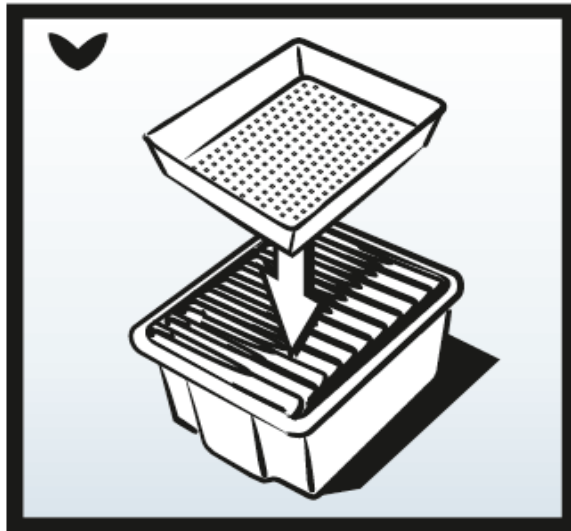
Step 3 – Placing mops in the box



Insert a maximum of 6 folded mops into the box with arrow pointing toward the bottom of the box. The mops should be folded such that the arrow is on the outside. This orientation ensures that the leading edge of the mop is sitting (and touching) the bottom of the box. The pocket side of the mop will be at the top.

Product Use – Operating Procedure

Step 4 – Saturating the mops



1. Place the sieve over the top of the box
2. Pour in your premixed disinfectant solution for the following results:
More Wet (disinfecting) – 300ml/mop
Less Wet (cleaning) – 200ml/mop
3. Wait 10 minutes before using the mops. This will ensure full saturation.
4. For a more thorough saturation perform a 45° tilt (front, back, side, side) for 10 second count in each position. Performed twice. After saturation (Step 2) and prior to use.

Product Use – Operating Procedure

Step 4 – Continued. Tilt Technique

Front



Back



Left



Right



For a more thorough saturation perform a 45° tilt (front, back, side, side) for 10 second count in each position. Performed twice. After saturation and prior to use.

Product Use – Operating Procedure

Step 5 – Putting Mop On Frame

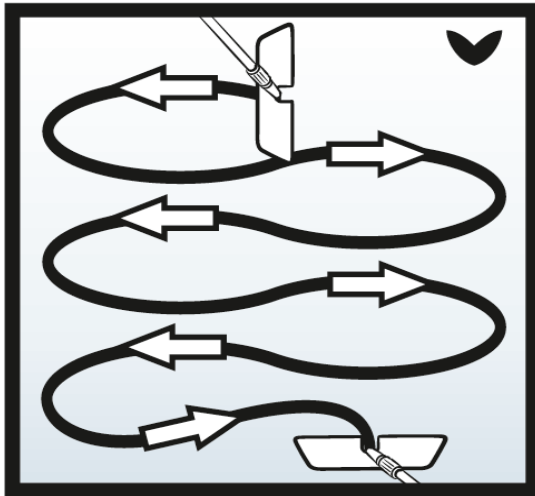


1. Grab one of the mops by the corner near the arrow from the box.
2. While holding the mop frame at one end, mount mop onto the frame by inserting the spring end of the mop frame into the mop pocket and pulling the other end of the mop over the mop frame. Notice the orientation of the “side indicator” arrow when mounting on the frame. Arrow will be at the top near fingers.

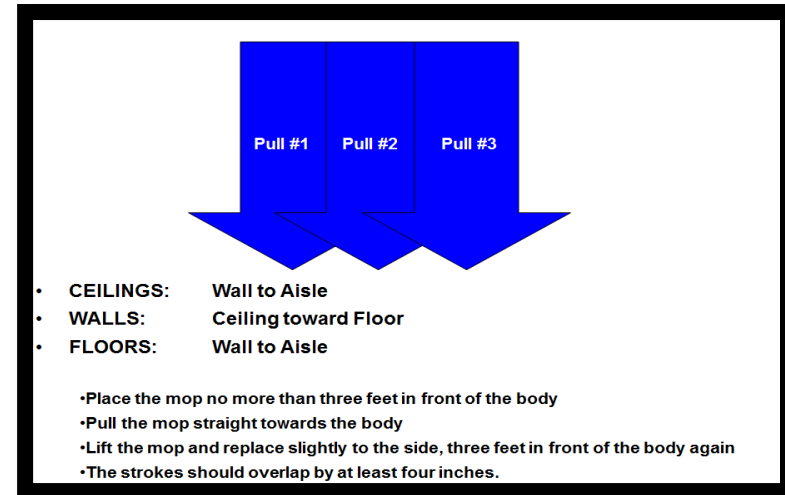
Product Use – Operating Procedure

Step 6 – Cleaning/Disinfecting Technique

Modified Figure 8



Pull & Lift



The overlapping “modified figure 8” method or “pull and lift” method are recommended, starting at the furthest end of the dirty area

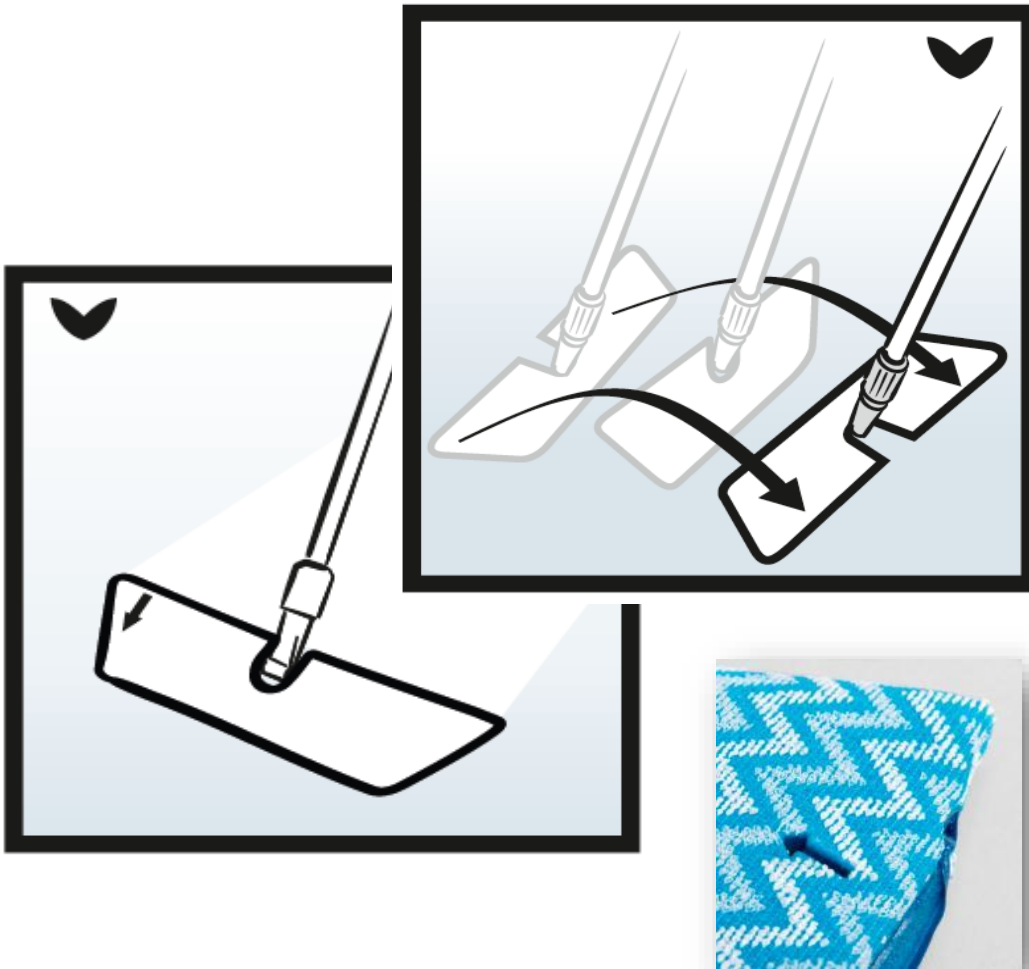
Coverage per mop ranges between 300 to 400 ft² depending on the amount of saturation and contact time desired.

Video’s Displaying Technique and Use of CE Duo

- Floor - Modified Figure 8 Technique. <http://youtu.be/pLEMD2IMSc8>
- Wall - Modified Figure 8 Technique. <http://youtu.be/wjpuuHgXkL0>
- Wall - Pull and Lift Technique. <http://youtu.be/qefVvgr2pE8>
- Ceiling - Pull and Lift Technique. <http://youtu.be/HnwvG8SXMru>

Product Use – Operating Procedure

Step 7 – Duo Advantage Method



The use of the Duo mop/frame along with gravity allows the operator to turn over the mop to the “clean” side in order to continue to clean/disinfect effortlessly and cover up to 2X the area without going back to the bucket.

Each side will cover ~150-200ft²

“Side Indicator” Arrow (on one side only) allows the operator to know which side was being used when flipping the mop to a fresh side. The arrow also acts as a reminder of “working direction”, always be working toward the leading edge of the mop.

Product Use – Operating Procedure

Step 8 – Mop Removal From Frame

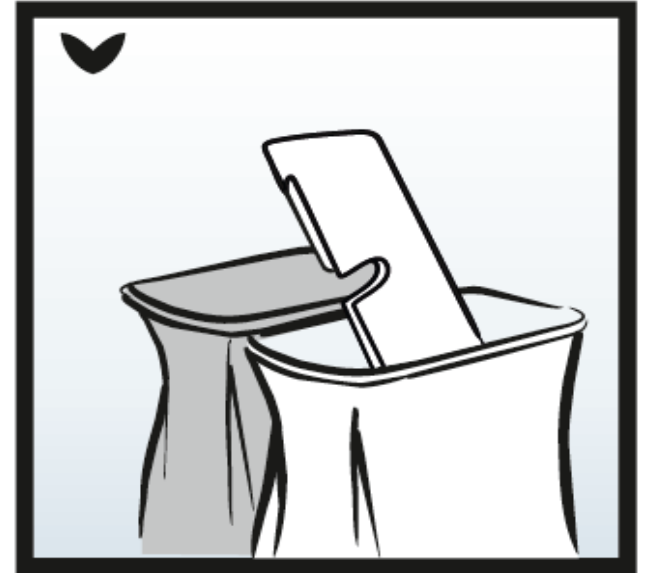


There are 2 recommended methods for taking off a used/dirty mop:

1. Use frame lever for a “touch-less” dismount (do not use this method if mop is intended for reuse as some tearing may occur if repeated)
2. Grab handle frame and use fingers to pull mop off the frame (similar and opposite to mounting a clean mop)

Product Use – Operating Procedure

Step 9 – Dirty Mop Collection Process

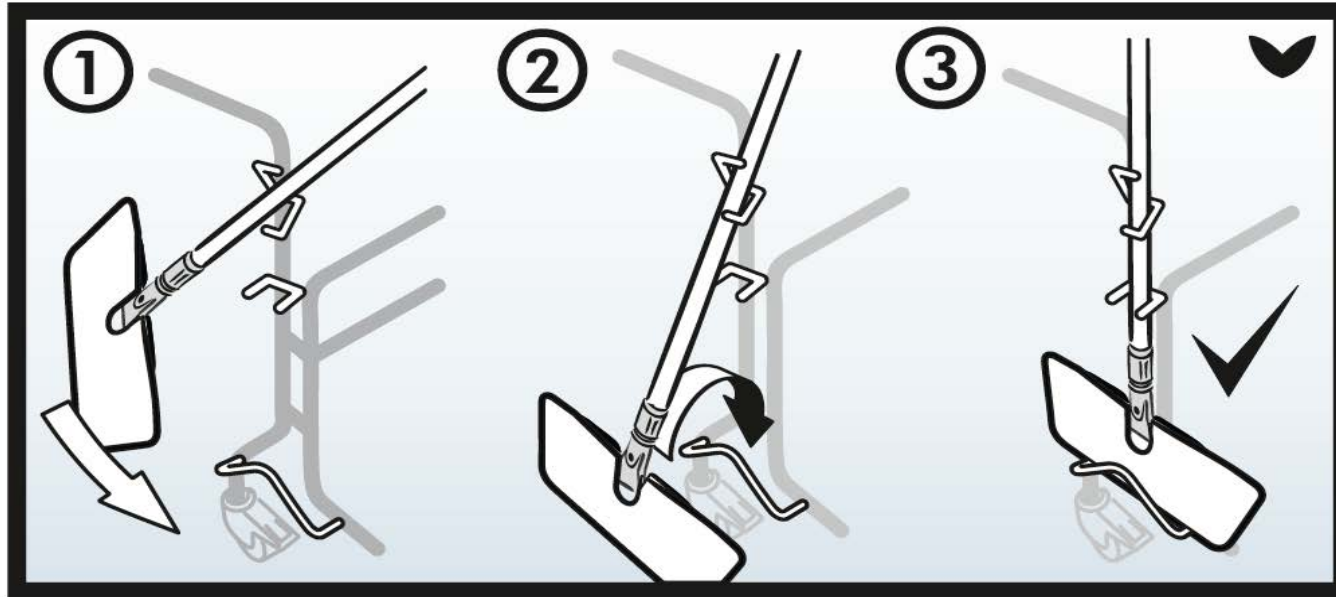


Dirty or Used mops should be properly handled by depositing the used mop into a designated, “dirty box” or “dirty bag”

Next new mop could now be used from the pre-prepared box to clean/disinfect the next area.

Product Use – Operating Procedure

Step 10 – Mounting Handle and Frame To Trolley



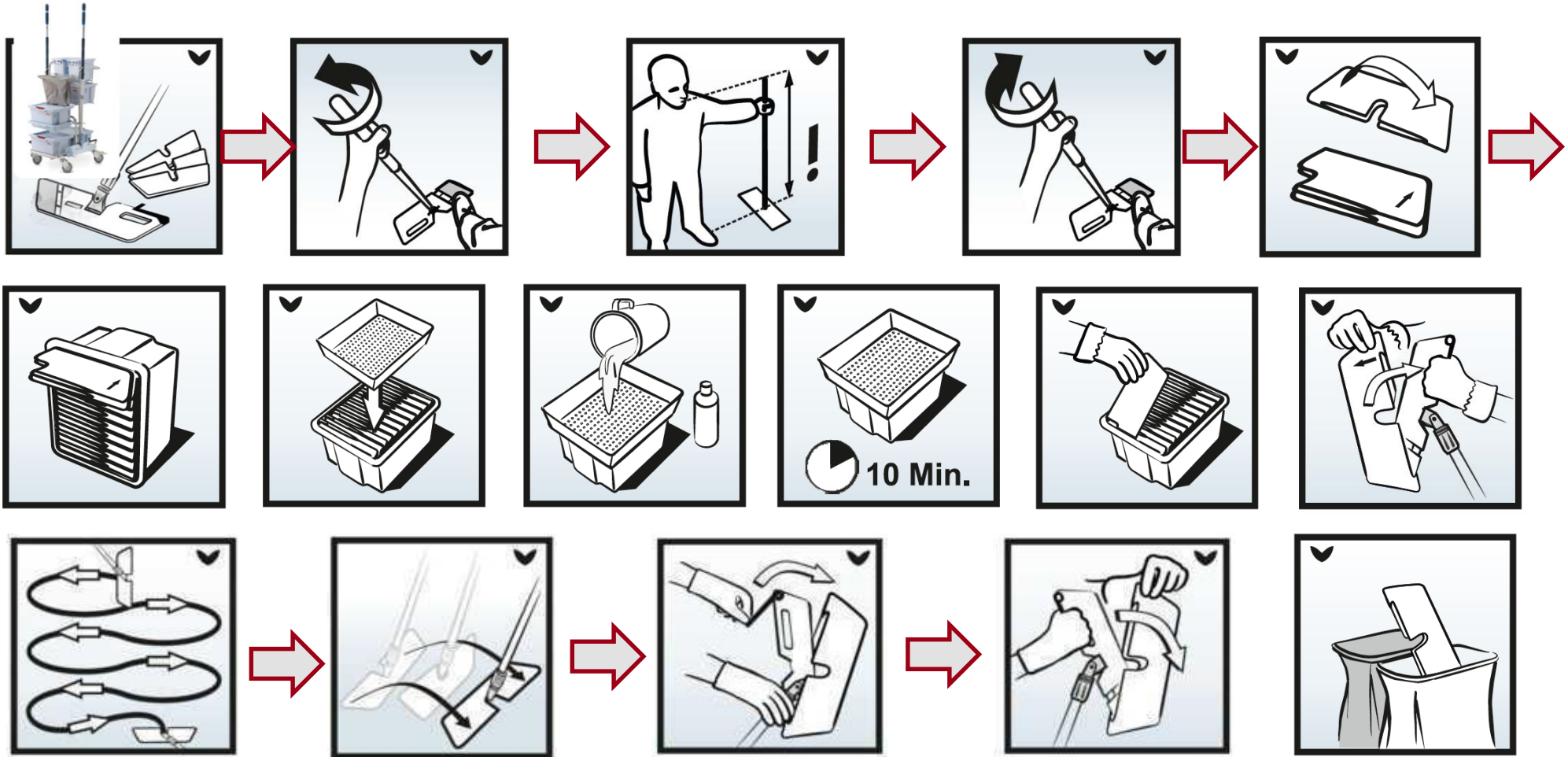
Use a 3 step technique for mounting tool to trolley:

1. Angle handle at 45° to insert into S-shape handle holder
2. Come back to 0° with handle but still away from trolley
3. In one motion lift and bring mop frame into frame holder and aligning fork

Repeat as needed

Product Use – Operating Procedure

Instructional Diagram – Pre Prepared



Thank you

Monitor the bugs
entering your cleanroom

Vileda Professional

Leo Gubenko

Global Technical Manager – Controlled Environment

Leo.Gubenko@fhp-ww.com

