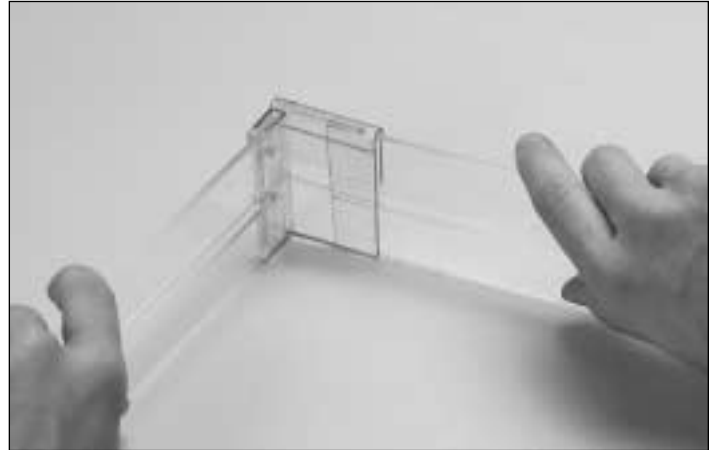
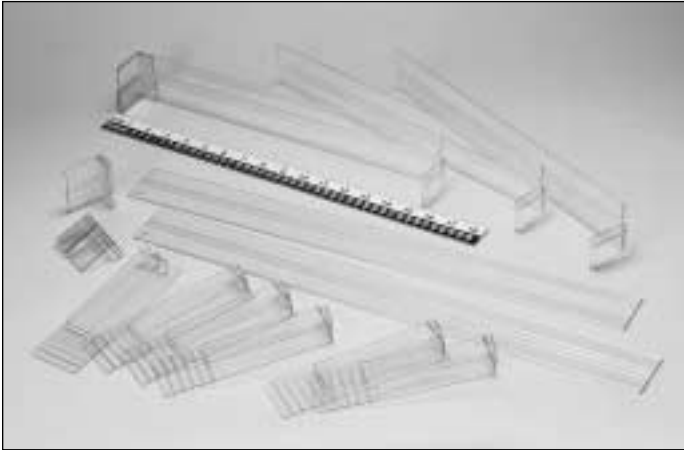


Instructions for the Drawer Divider System (#1918 or 1919)



1. Before assembling your HCL Drawer Divider System., please familiarize yourself with all the parts, and check to make sure that you have all the parts as listed below. The box should contain: 2 plexiglass rails, 21 $\frac{7}{8}$ " long, 2 plexiglass rails, 15 $\frac{7}{8}$ " long, with one riveted clip (already connected) on one end and an attachable clip on the other end, 6 short universal dividers, and 2 attachable clips.

2. Taking one of the 21 $\frac{7}{8}$ " long plexiglass rails and the 15 $\frac{7}{8}$ " long plexiglass rail with the riveted clip on one end and an attachable clip on the other end, connect the two pieces by pushing the end of the 21 $\frac{7}{8}$ " rail into the clip on the 15 $\frac{7}{8}$ " rail. Now do the same thing with the other 21 $\frac{7}{8}$ " long plexiglass rail and attach it to the other side of the 15 $\frac{7}{8}$ " long rail.



3. This is what the drawer divider system should look like at this point.



4. Obtain the attachable clips and connect them to the 15 $\frac{7}{8}$ " long plexiglass rails with one riveted clip, which is already connected at one end. Make sure you connect the side with the two holes in the clips, onto the rails.



© Health Care Logistics, Inc. 2000

HCL-INTL is a registered trademark of Health Care Logistics, Inc.

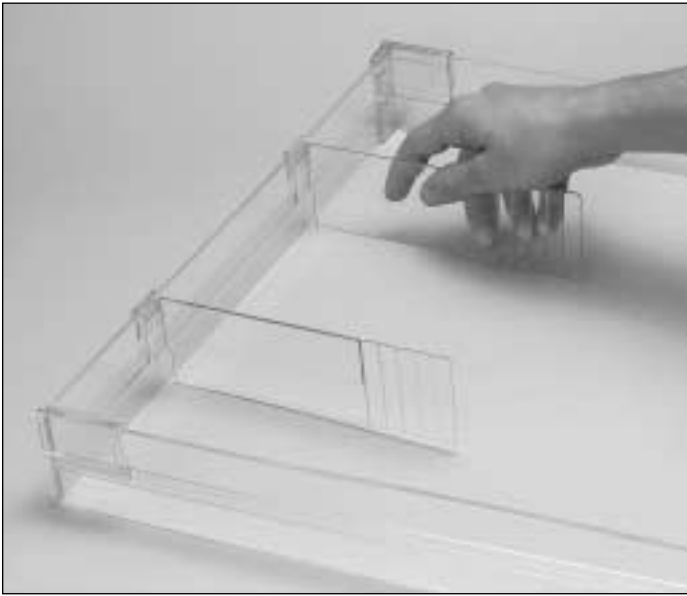


Sheet #1918
REV.010402

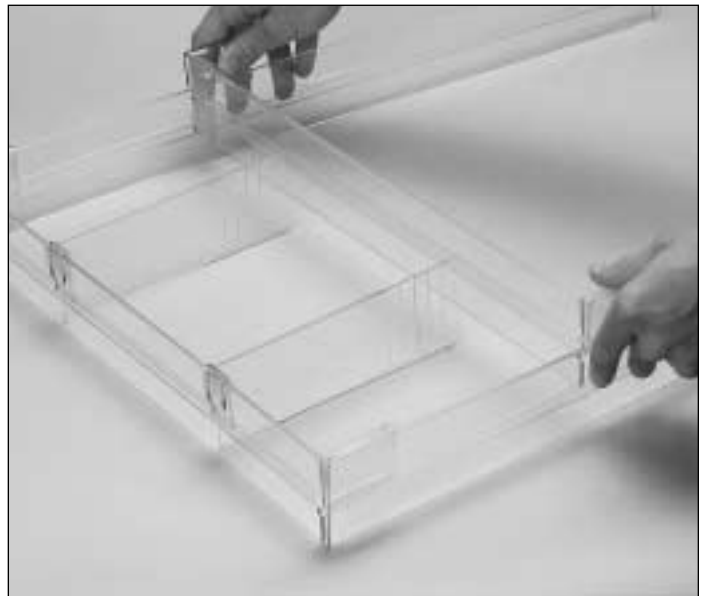
Call Free 1 800 848 1633 or 888 HCL INTL[®] (425 4685) • Fax Free 1 800 447 2923

International Call 740 477 1686 • International Fax 740 477 2923 • Web site <http://www.hcl-intl.com> • E-mail: HCL@hcl-intl.com

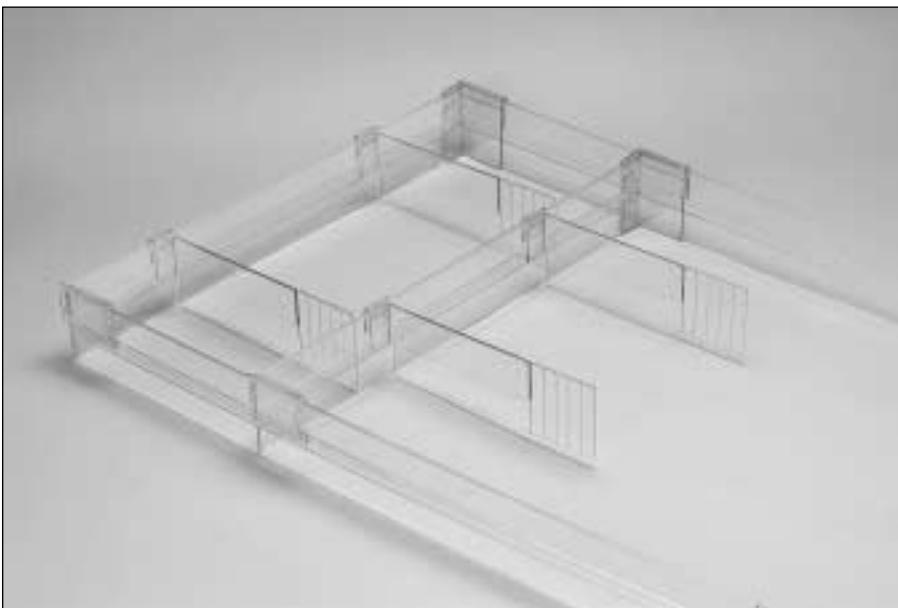
Instructions for the Drawer Divider System (#1918 or 1919)



5. After placing the clips onto the 15 $\frac{7}{8}$ " rails, take two of the short universal clips and place them on the 15 $\frac{7}{8}$ " rail of the three rail frame.



6. Using the two short universal clips as guides, place the 15 $\frac{7}{8}$ " long rail on the frame, making sure that you push the clips all the way down on the rails.



7. This is what the frame should look like after adding two more of the short universal clips to use as guides for the next rail.

Your small friend, indeed®
Health Care Logistics®
INC. 



© Health Care Logistics, Inc. 2000

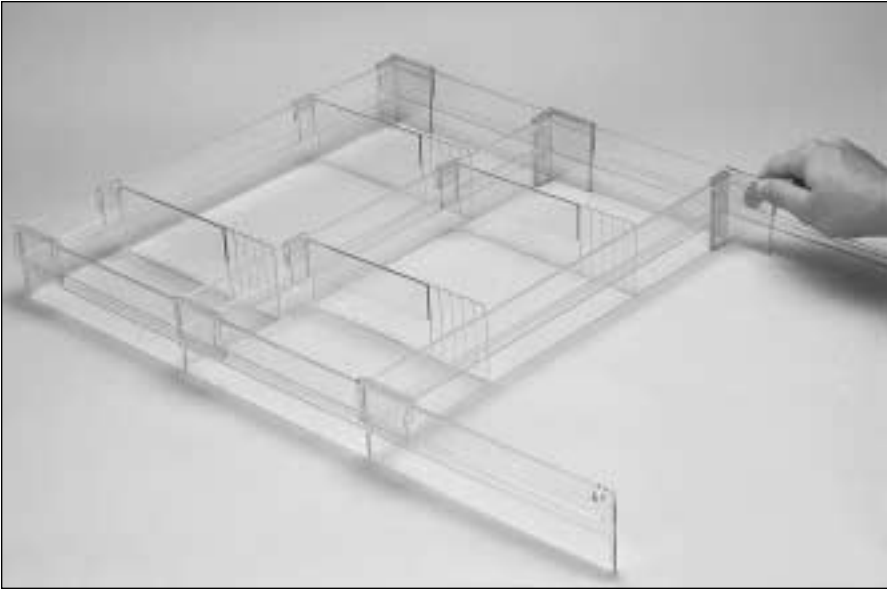
HCL-INTL is a registered trademark of Health Care Logistics, Inc.

Sheet #1918
REV.010402

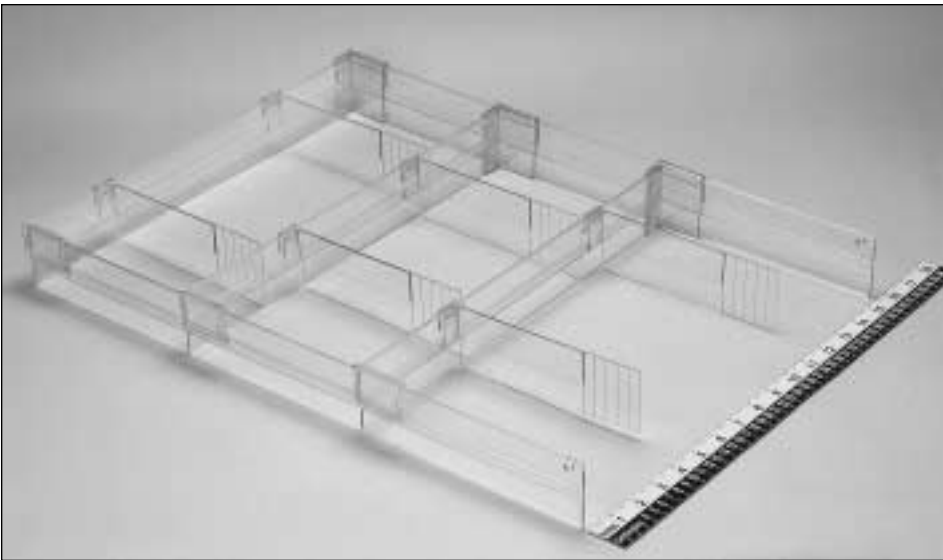
Call Free 1 800 848 1633 or 888 HCL INTL® (425 4685) • Fax Free 1 800 447 2923

International Call 740 477 1686 • International Fax 740 477 2923 • Web site <http://www.hcl-intl.com> • E-mail: HCL@hcl-intl.com

Instructions for the Drawer Divider System (#1918 or 1919)

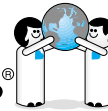


8. Place the other 15 $\frac{7}{8}$ " long plexiglass rail onto the frame using the short universal rails to guide you on where to place the rail.



9. Congratulations you have finished assembling your HCL Drawer Divider System.

Your small friend, indeed®
Health Care Logistics
INC.



© Health Care Logistics, Inc. 2000

HCL-INTL is a registered trademark of Health Care Logistics, Inc.

Sheet #1918
REV.010402

Call Free 1 800 848 1633 or 888 HCL INTL® (425 4685) • Fax Free 1 800 447 2923

International Call 740 477 1686 • International Fax 740 477 2923 • Web site <http://www.hcl-intl.com> • E-mail: HCL@hcl-intl.com