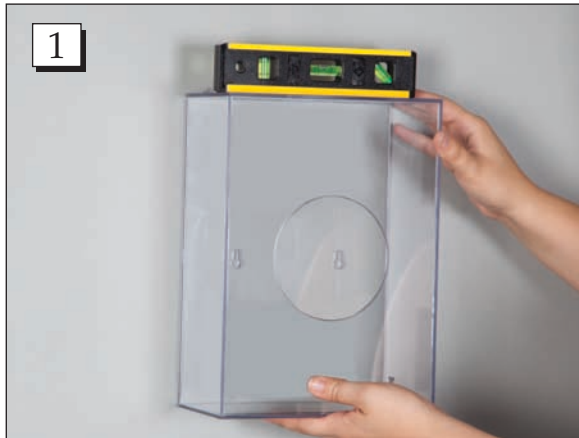


ASSEMBLY INSTRUCTIONS FOR

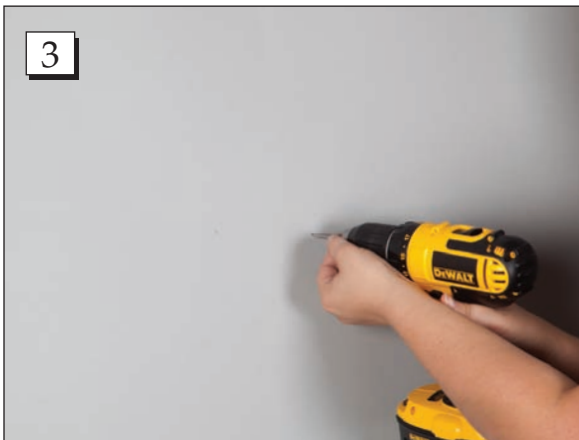
Bulk Dispenser with Wall Mount (#18773)



Step 1. Place the wall dispenser against the wall and use a level to straighten the dispenser.



Step 2. Use a pencil to mark the drill holes.



Step 3. Use a screwdriver to screw in 2 screws (not provided). Leave about 1/4" of the screw out from the wall for the dispenser to hang from.



Step 4. Line up the dispenser to the screws.



Step 5. Lift the lid of the dispenser and fill it with shoe covers, beard covers or desired item.



Call Free 1.800.848.1633 • Fax Free 1.800.447.2923
Web: GoHCL.com • Email: hcl@GoHCL.com