

BEFORE YOU ASSEMBLE YOUR OXYGEN TANK BRACKETS:

Account for all parts necessary to assemble the Oxygen Tank Brackets. Do not discard any packing material until all parts are accounted for.

KEY QTY. DESCRIPTION

A 2 BRACKET

B 2 STRAP

ENVELOPE CONTAINS:

C 1 BRACKET

D 4 # 14-10 X 5/8" SCREW

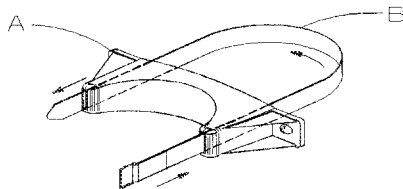
E 4 1/4" WASHER

F 4 1/4-20 X 1/2 " SCREW

G 4 1/4-20 NUT (FOR OPTIONAL LOCATIONS)

STRAP INSTRUCTIONS:

Thread strap (B) through bracket (A). Be sure the Velcro portion of the strap is towards the



ATTACHING BRACKETS TO UNIT CARTS:

For Uni Cart: Attach Brackets (A & C) to Uni Cart, using #14-10 X 5/8" screw (D) and washer (E) tighten with a 3/8" wrench. See figure 1.

For Full Access Cart: Attach Brackets (A & C) to Full Access Cart, using 1/4-20 X 1/2" screw (F) and washer (E) tighten with a 3/8" wrench. See figure 2.

For ER-2000: Attach Bracket (A) to ER-2000 cart, using 1/4-20 X 1/2" screw (F) and washer (E) tighten with a 3/8" wrench. See figure 3.

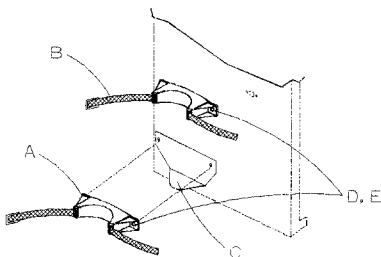


figure 1. Uni Cart

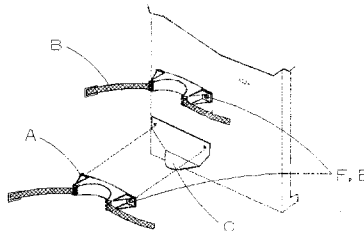


figure 2. Full Access Cart

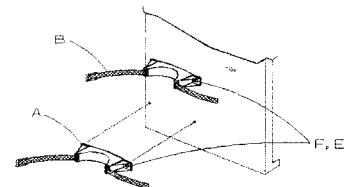


figure 3. ER-2000