

ASSEMBLY INSTRUCTIONS FOR

Slim Line Wall Desk (#17684)



NOTE: Be sure to select the appropriate mounting hardware to ensure safe and reliable use. Mount hardware through a stud, blocking or rigid structure where possible during installation.



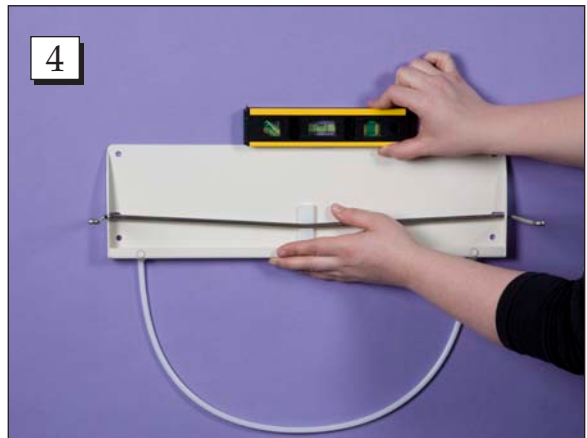
Step 1. First, remove the wall plate from the desktop by pushing inward on the metal legs.



Step 2. Pull the metal leg from the desktop.



Step 3. Now you have both pieces separate.



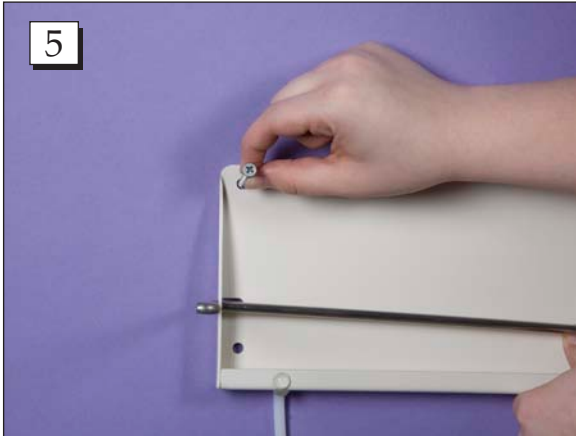
Step 4. Using a level, place the wall plate in the desired place on the wall. (Note: Make sure the white plastic loop is hanging downward.)

Call Free 1.800.848.1633 or 1.888.HCL-INTL Fax Free 1.800.447.2923

Website: www.HealthCareLogistics.com • Email: hcl@HealthCareLogistics.com

ASSEMBLY INSTRUCTIONS FOR

Slim Line Wall Desk (#17684)



Step 5. Place a screw in the first mounting hole.



Step 6. Tighten the screw with a screwdriver and repeat with the remaining three mounting holes.



Step 7. Now replace the desktop.



Step 8. Slide the metal leg into its notch on one side.



Step 9. Push in on the opposite metal arm to place it in its notch.



Desk Open

Call Free 1.800.848.1633 or 1.888.HCL-INTL Fax Free 1.800.447.2923
Website: www.HealthCareLogistics.com • Email: hcl@HealthCareLogistics.com

ASSEMBLY INSTRUCTIONS FOR

Slim Line Wall Desk (#17684)



Step 11. Close desk to keep it out of the way.



Call Free 1.800.848.1633 or 1.888.HCL-INTL Fax Free 1.800.447.2923
Website: www.HealthCareLogistics.com • Email: hcl@HealthCareLogistics.com