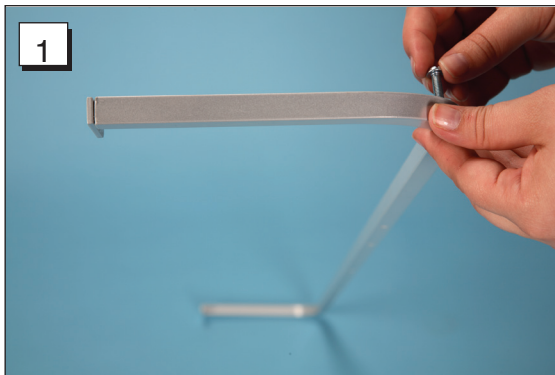


ASSEMBLY INSTRUCTIONS FOR

Wall Rack for Prescription Bags (#17543)

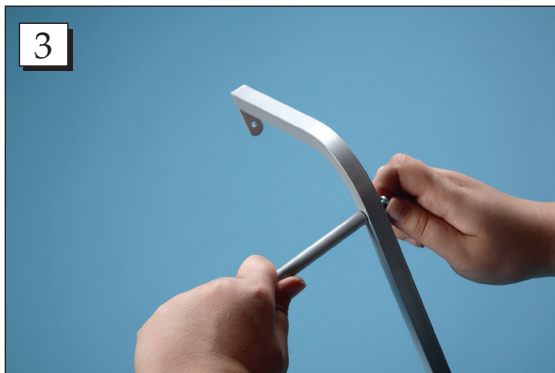
NOTE: Be sure to select the appropriate mounting hardware to ensure safe and reliable use. Mount hardware through a stud, blocking or rigid structure where possible during installation.



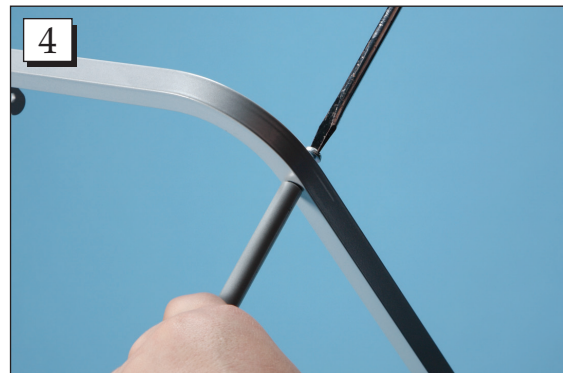
Step 1. Take one side rail and one rail screw and place it through the top hole of the side rail.



Step 2. Hold the screw in place with your thumb.



Step 3. Hand thread one hanging rail onto the screw.



Step 4. Use a flat head screw driver to tighten the rail in place.

Call Free 1.800.848.1633 • Fax Free 1.800.447.2923
Web: www.HealthCareLogistics.com • Email: hcl@HealthCareLogistics.com